

Visual Style Guide for NotebookLM Presentations

This document serves as a comprehensive visual style guide for creating infographics and slide decks within NotebookLM. It categorizes 34 distinct aesthetics to help you select the most effective visual language for your specific content.

Section 1: Educational & Explainer

1. Chalkboard
2. Whiteboard
3. Sketch Noting
4. Graphite & Charcoal Realism
5. Claymation

Section 2: Technical & Engineering

6. Exploded View Diagram
7. Blueprint
8. Isometric 3D Illustration
9. Minimalist 2D Data-Viz
10. Dark-Mode SaaS Isometric
11. Professional Futuristic
12. Neumorphic
13. High-Contrast Monospace

Section 3: Narrative & Strategic

14. Conceptual Journey Map
15. Strategic Infographic
16. Executive Dashboard
17. Watercolour
18. Heritage
19. Swiss Design
20. Glass-morphic UI
21. Corporate Memphis

Section 4: Playful & Tactile

22. Papercraft
23. Tactile 3D
24. Miniature World
25. Kawaii

Section 5: Nostalgic & Artistic

26. Pop Art
27. Risograph Print
28. Retro '90s Gaming
29. Oregon Trail
30. Cyberpunk
31. Anime Battle
32. Anime
33. Retro Print
34. Brutalist Design

Pro Tips & Technical Notes

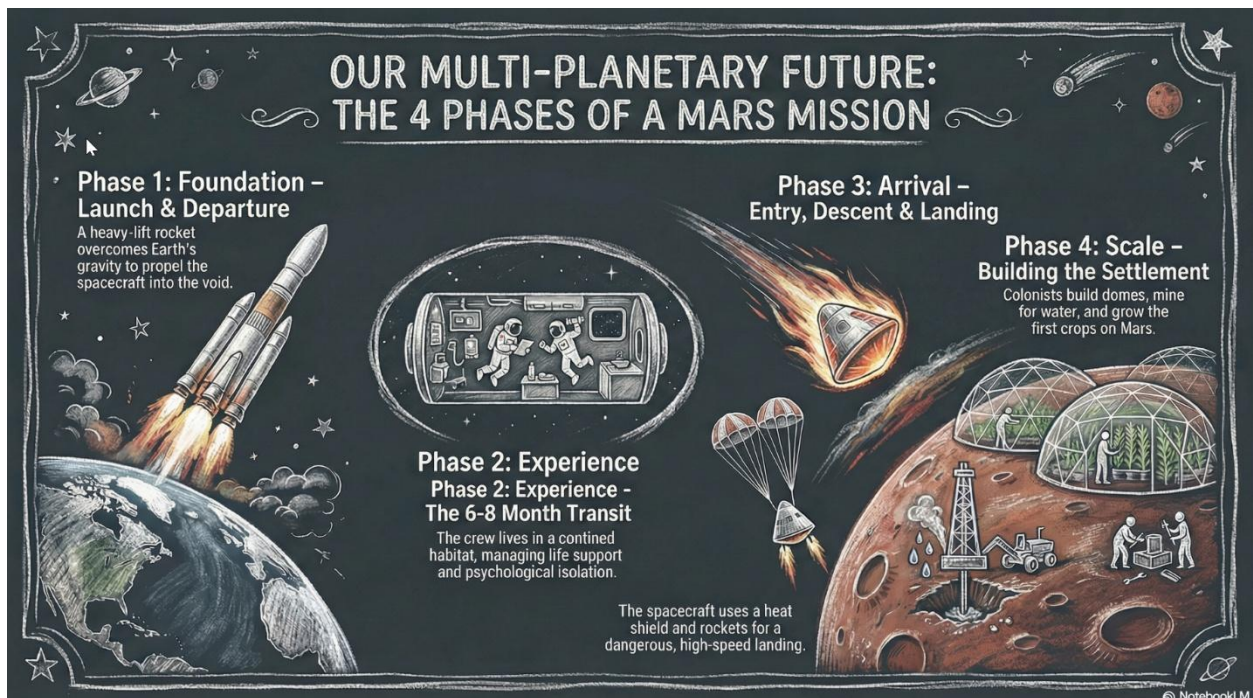
1. Style Matcher
2. Selecting the Right Aesthetic
3. Strategic Logic Guide
4. Technical Constraints
5. Reverse-Engineering New Styles
6. Modifying Color Schemes

Section 1: Educational & Explainer Styles

These styles are best for training, classrooms, and simplifying complex concepts through familiar instructional mediums.

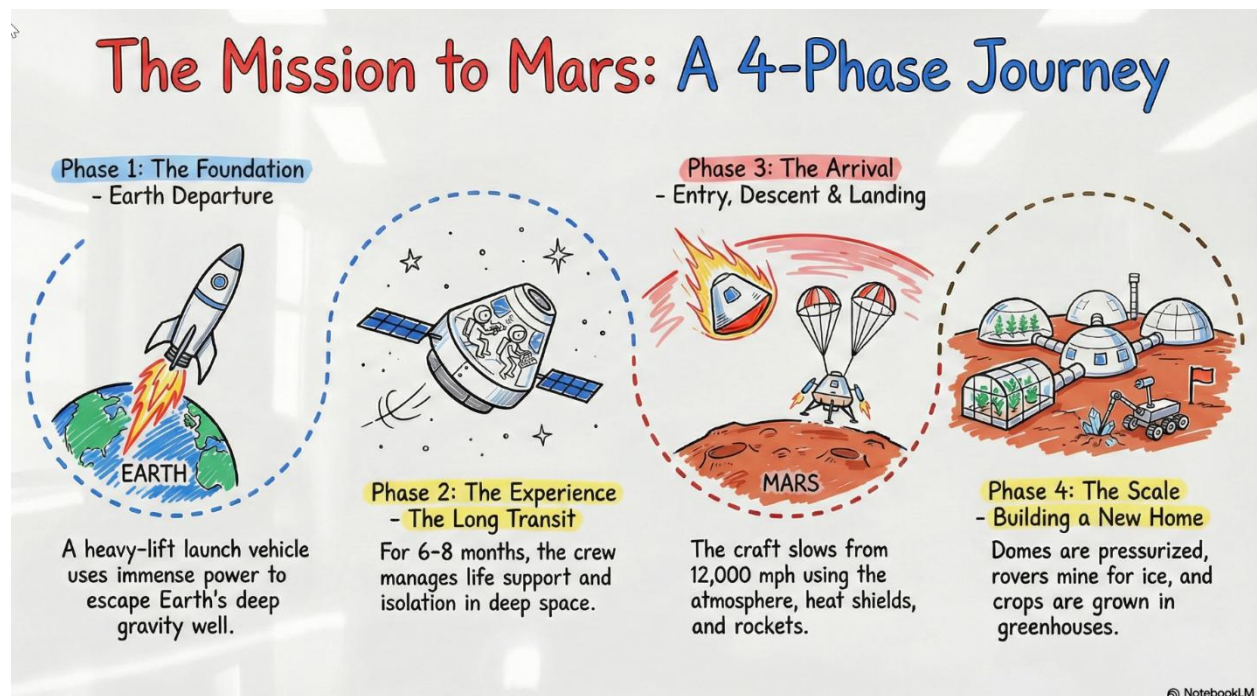
1. Chalkboard Style

- **Description:** White "chalk" lines on a dark slate background with textured shading.
- **Best For:** Academic lectures, physics/math proofs, and historical retrospectives.
- **Prompt:** "A realistic chalkboard style illustration with dusty, hand-drawn white chalk lines. Include authentic textured shading, faint chalk dust smudges, and a dark slate-gray background with a matte, slightly weathered texture. Lighting should mimic a soft classroom ambient glow."



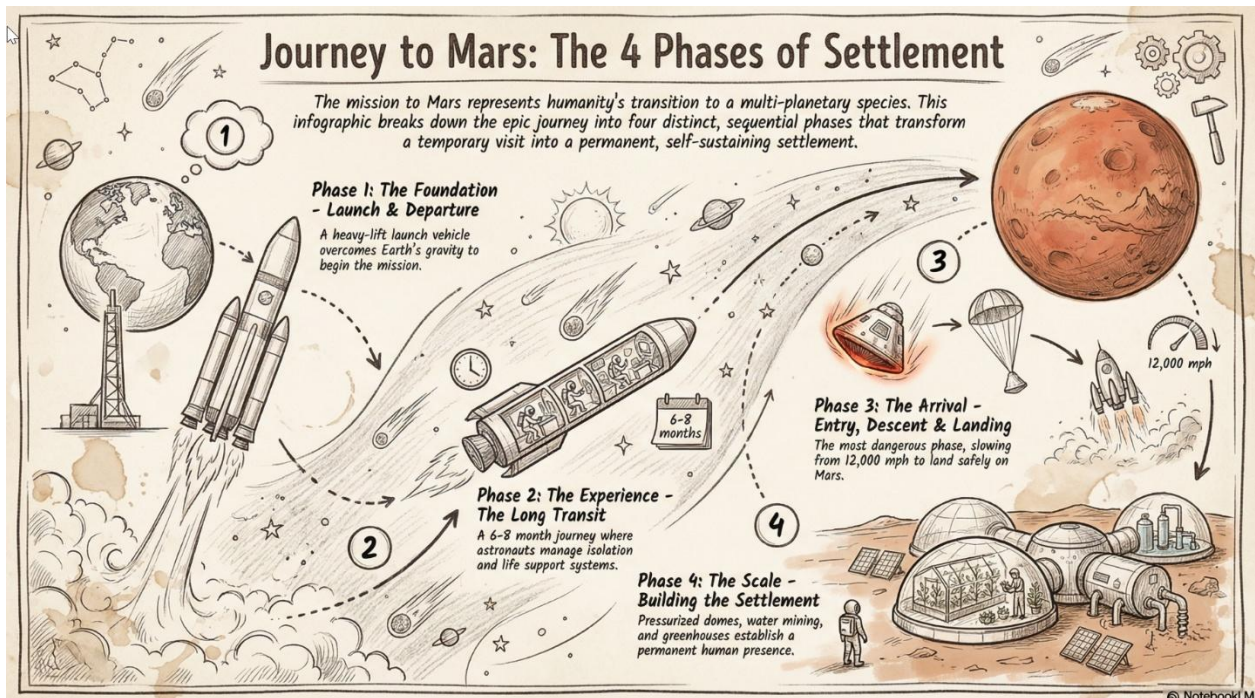
2. Whiteboard Style

- **Description:** A clean look resembling markers on a glossy whiteboard.
- **Best For:** Internal team briefings, "live" brainstorming sessions, and agile project updates.
- **Prompt:** "A clean, glossy whiteboard aesthetic featuring hand-drawn marker lines with slight 'ink-pooling' at the ends of strokes. Use basic primary marker colors (red, blue, black) on a bright white reflective background. Include faint ghosting marks from previously 'erased' content to give it a lived-in, brainstorming feel."



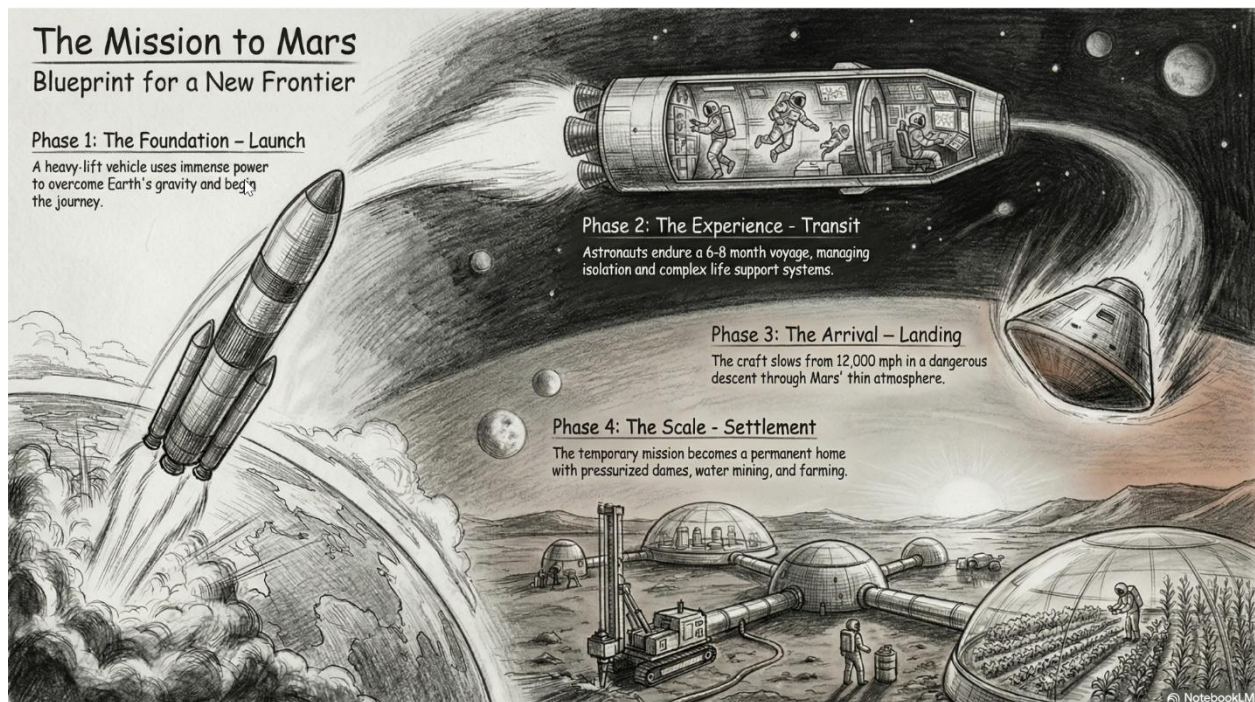
3. Sketch Noting

- **Description:** Hand-drawn icons and connectors with a classic "visual note-taking" feel.
- **Best For:** Executive summaries, workshop synthesis, and human-centric storytelling.
- **Prompt:** "A professional sketch-noting aesthetic on an off-white, slightly textured paper background. Feature minimalist hand-drawn icons with variable-width ink lines, organic arrow connectors, and accent highlight colors in a soft marker-pen style. The composition should feel balanced and human-centric, like a live workshop synthesis."



4. Graphite & Charcoal Realism

- **Definition:** A fine-art style using monochromatic hand-drawn textures, cross-hatching, and realistic smudging.
- **Best For:** High-stakes ethical discussions, historical reflections, or "Day in the Life" human-centric storytelling.
- **Prompt:** "A detailed graphite and charcoal drawing with realistic hand-drawn textures. Feature heavy cross-hatching, soft pencil smudging for shadows, and visible paper grain. The aesthetic is monochromatic and sophisticated, utilizing high-contrast lighting to create a somber, cinematic, and deeply human feel."



5. Claymation

- **Description:** A textured, stop-motion look that appears sculpted from clay.
- **Best For:** Friendly explainer videos, creative workshops, internal team-building announcements, and student-facing content.
- **Prompt:** "A high-fidelity claymation style featuring handcrafted 3D models with visible tactile textures. Include soft studio lighting with deep shadows, a narrow depth-of-field, and a playful stop-motion aesthetic. The scene should appear as if sculpted from physical polymer clay on a miniature set."

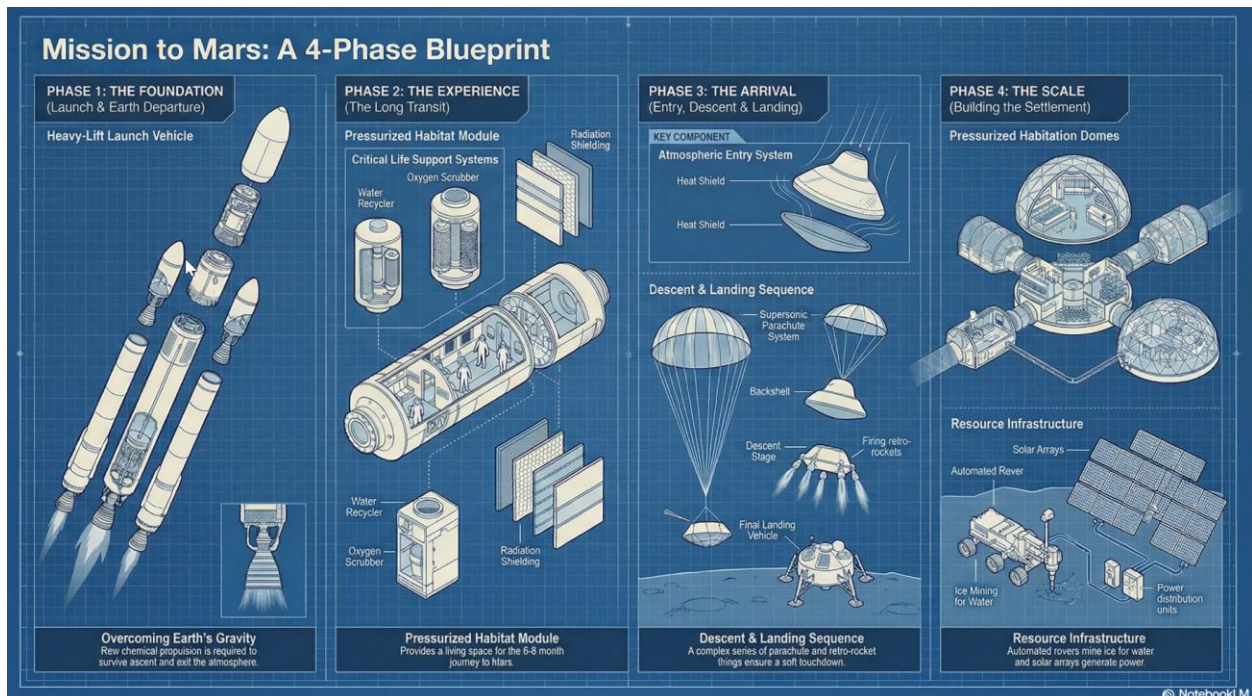


Section 2: Technical, Engineering & Architectural Styles

Best for product design, structural planning, and high-tech corporate environments.

6. Exploded View Diagram

- **Description:** A technical style showing components separated to reveal internal assembly.
- **Best For:** Product mechanics, hardware engineering, and systems architecture.
- **Prompt:** "A technical exploded view diagram in a clean blueprint style. Feature separated mechanical components with thin, precise dashed connecting lines. Use a high-angle orthographic projection, no perspective distortion, and a monochromatic technical palette to emphasize internal assembly and hardware engineering."



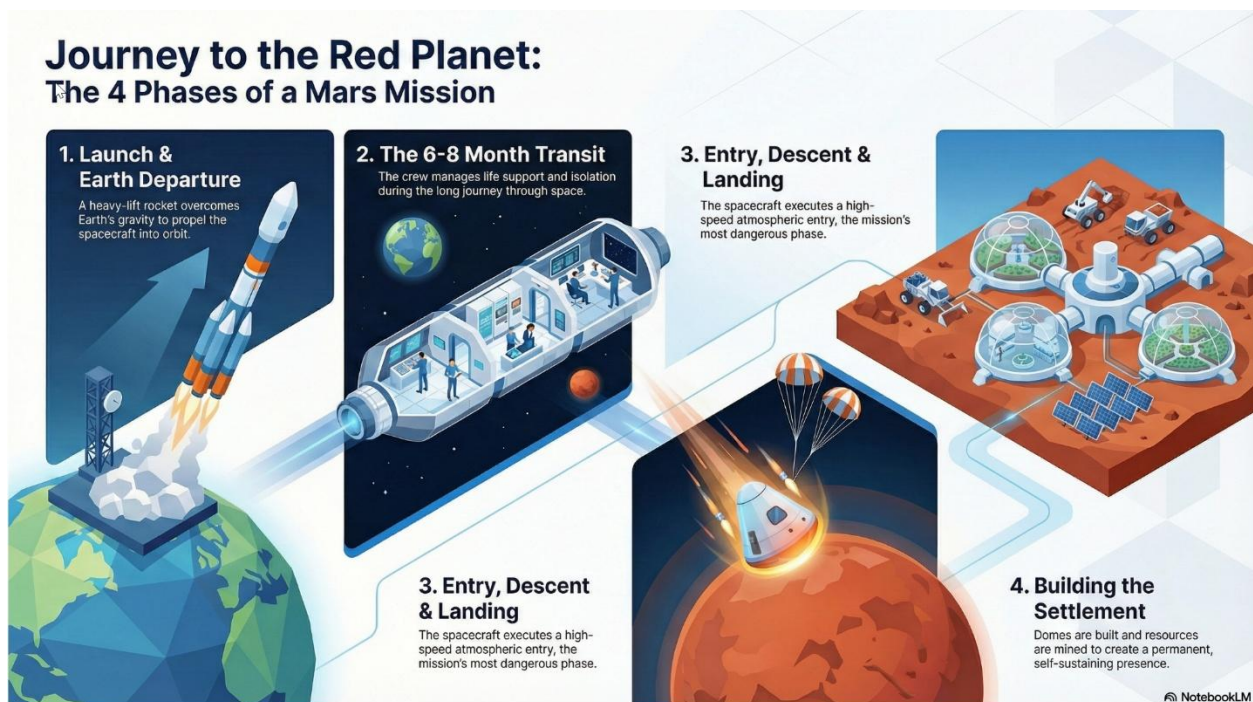
7. Blueprint

- **Description:** High-contrast white technical lines on a deep cyan-blue grid.
- **Best For:** Architectural plans, foundational strategy, and "Master Plan" slides.
- **Prompt:** "A high-contrast blueprint aesthetic featuring white technical architectural lines on a deep cyan-blue background. Incorporate a light drafting grid overlay, precise margin annotations, and a 'blueprint paper' texture with slight tonal variations for an authentic master-plan feel."



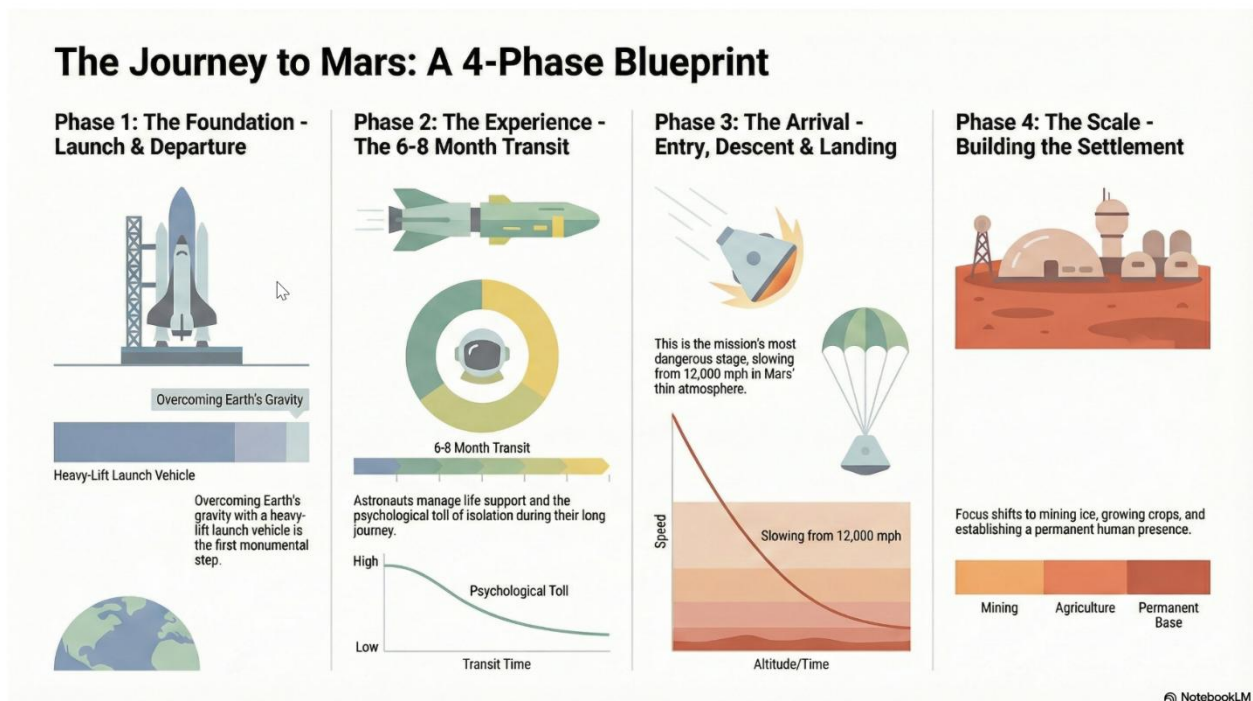
8. Isometric 3D Illustration

- **Description:** A clean 3D perspective with flat colors and sharp edges.
- **Best For:** Visualizing data centers, logistics networks, and SaaS ecosystems.
- **Prompt:** "A clean isometric 3D illustration with flat vector colors and razor-sharp edges. Use a minimalist corporate tech aesthetic with soft directional lighting, no heavy gradients, and an 100% orthographic 45-degree camera angle to visualize logistics and digital ecosystems."



9. Minimalist 2D Dava-Viz

- **Definition:** A hyper-clean, flat vector style focusing on geometric clarity and mathematical precision rather than illustration.
- **Best For:** Quantitative reporting, market share breakdowns, and "by-the-numbers" executive summaries.
- **Prompt:** "A minimalist 2D data-visualization style featuring flat vector bars, donut charts, and line graphs. Use a clean white background, perfectly aligned geometric shapes, and a sophisticated muted palette. Emphasize clarity and whitespace with zero gradients, no shadows, and professional sans-serif labeling."



10. Dark-Mode SaaS Isometric

- **Definition:** A high-tech 3D perspective set against a deep charcoal or navy background, using glowing "edge-lighting" to define shapes.
- **Best For:** Software architecture diagrams, cloud infrastructure pitches, and cybersecurity workflows.
- **Prompt:** "A premium dark-mode isometric 3D illustration on a deep charcoal background. Features sleek, floating technological modules with vibrant neon edge-lighting and subtle glass reflections. Use a 45-degree orthographic projection, soft glowing data-streams connecting components, and a sense of infinite digital space."



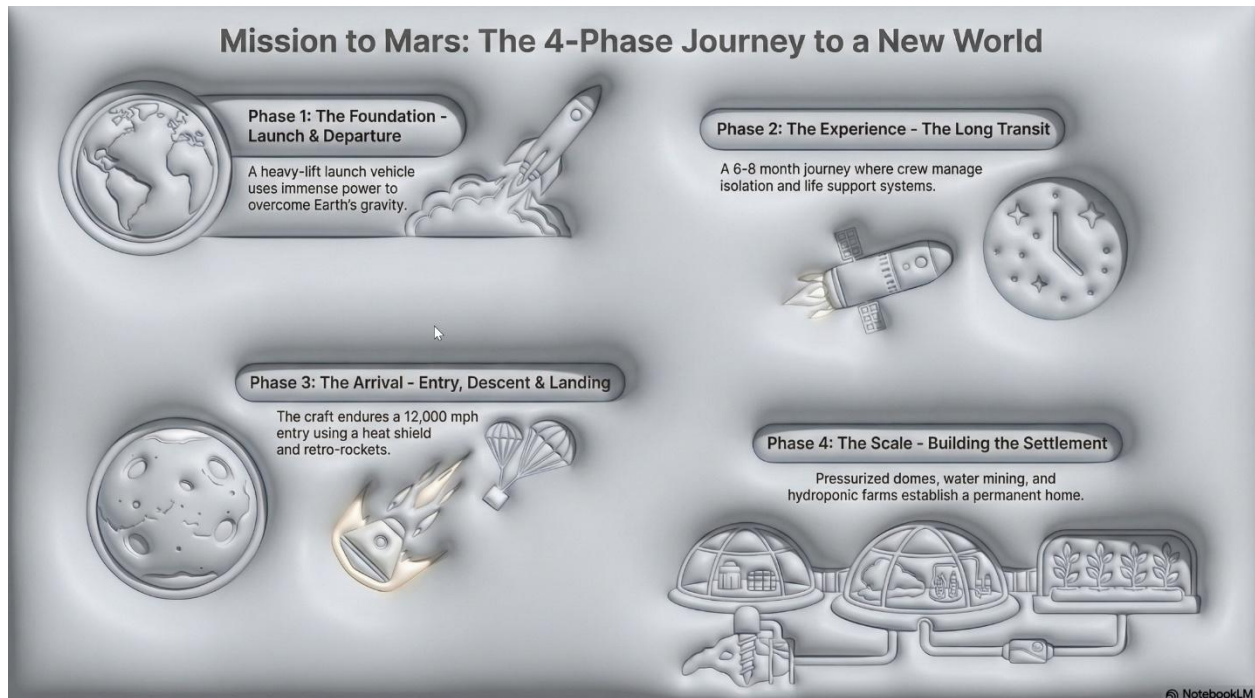
11. Professional but Futuristic

- **Description:** Sleek glass-morphism and minimalist high-tech UI elements.
- **Best For:** AI and digital transformation pitches, software launches, and high-end corporate decks.
- **Prompt:** "A high-end professional futuristic design featuring sleek glass-morphism and minimalist high-tech UI elements. Include subtle light-leaks, frosted transparency, and a clean corporate dark-mode aesthetic with refined san-serif typography and high-stakes visual weight."



12. Neumorphic

- **Description:** A modern UI style using soft shadows to create a "plastic" extruded 3D effect.
- **Best For:** Mobile app concepts, dashboard designs, and minimalist tech interfaces.
- **Prompt:** "A modern neumorphic UI style featuring soft internal and external shadows to create a 'plastic' extruded 3D effect. Use a low-contrast, monochromatic palette with subtle highlights on the upper-left edges to emphasize the tactile, touchable nature of the interface."



13. High-Contrast Monospace

- **Description:** A data-heavy aesthetic using fixed-width fonts and "terminal-style" neon accents on black backgrounds.
- **Best For:** Cybersecurity, technical deep-dives, and financial "stress tests."
- **Prompt:** "A high-contrast technical monospace aesthetic with a deep black background. Feature vertical data streams, monospace typography, and sharp rectilinear borders in high-visibility accents to convey cybersecurity-grade raw precision and financial stress-test authority."

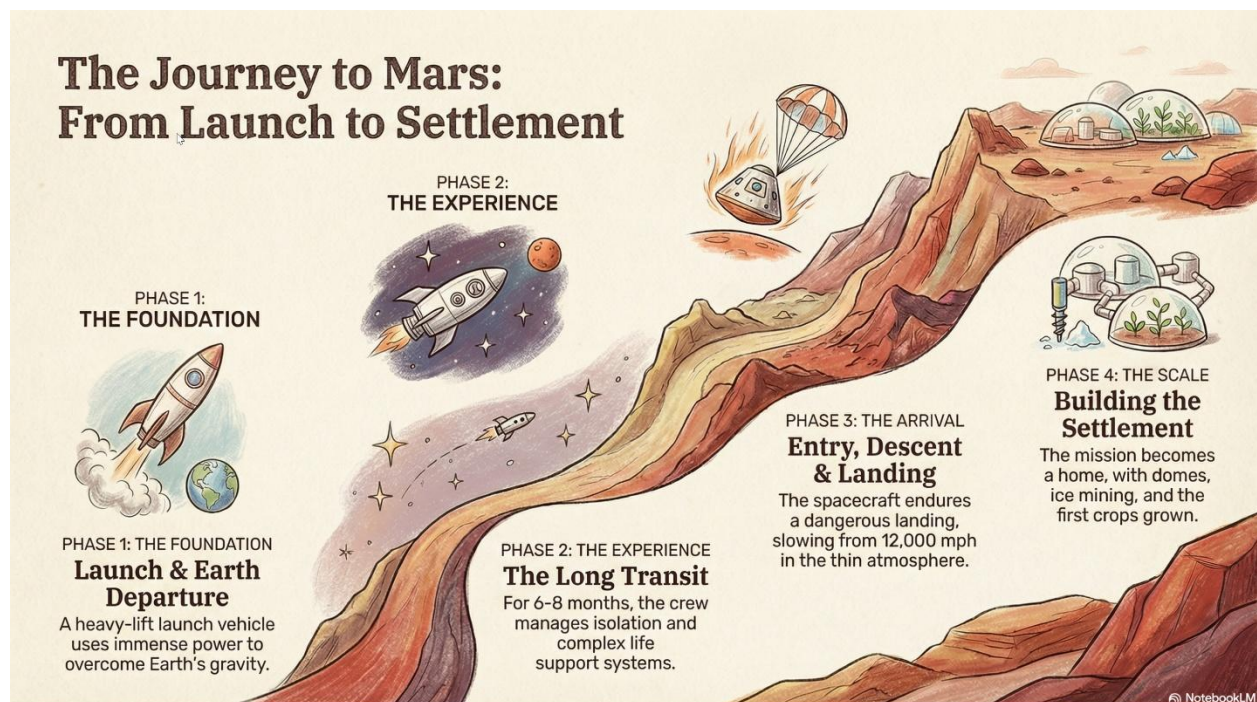


Section 3: Narrative & Strategic Journey Styles

Best for roadmaps, policy briefs, company history, and high-level visionary presentations.

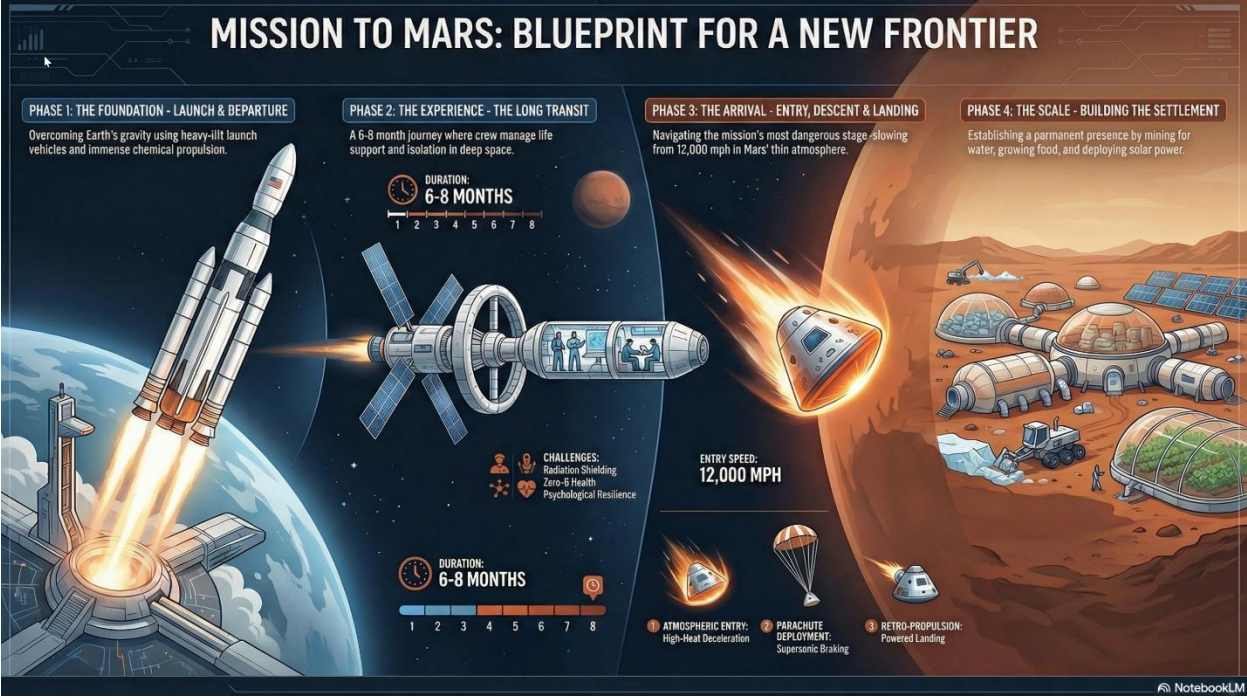
14. Conceptual Journey Map

- **Description:** A metaphorical landscape (like a mountain path) used to show progression.
- **Best For:** Strategic roadmaps, project milestones, and the "Four Stages of Impact."
- **Prompt:** "A high-level conceptual journey map featuring a winding, multi-stage path through a metaphorical landscape. Use soft, painterly textures and hand-drawn milestone icons. The composition should follow a clear left-to-right narrative flow with atmospheric perspective to show distance and progress."



15. Strategic Infographic

- **Description:** A professional, data-centric layout focused on a "Problem-Solution-Impact" narrative. It utilizes clean vector iconography, prominent "Hero Statistics" to establish high-stakes economic or technical value, and side-by-side comparison tables to validate a specific mandate or policy.
- **Best For:** Policy mandates, business cases, economic impact summaries, and environmental/sustainability transitions.
- **Prompt:** "A professional Strategic Infographic style with a clean, vector-based layout. Use a logical narrative flow featuring high-impact numerical callouts for 'Hero Statistics,' bold headers for problem/solution framing, and technical comparison tables. The aesthetic should be modern and authoritative, utilizing a limited professional color palette and flat-design iconography."



16. Executive Dashboard

- Description:** A high-density visual summary resembling a real-time command center. It uses "widgets," circular progress rings, and financial data clusters (such as **CapEx, EBITDA, and IRR**) to provide an at-a-glance overview of complex systems, project health, or national economic multipliers.
- Best For:** Quarterly business reviews (QBRs), financial projections, project health tracking, and KPI reporting.
- Prompt:** "A sleek **Executive Dashboard aesthetic** featuring a dark-mode UI. Include various data visualization 'widgets' such as circular progress rings, segmented bar charts, and **financial data clusters showing CapEx and ROI**. Use vibrant accent colors for data points against a refined, dark-gray background with subtle glass-morphism effects."



17. Watercolour

- **Description:** A soft, artistic aesthetic with fluid brushstrokes and atmospheric textures.
- **Best For:** Environmental initiatives, visionary concepts, and emotional storytelling.
- **Prompt:** "A soft watercolor painting with fluid brushstrokes, painterly textures, and minimalist bleed effects. Include a high-quality cold-press paper texture and atmospheric layering to create an artistic, emotional storytelling feel for visionary concepts."



18. Heritage

- **Description:** A classic, formal style with serif typography and traditional ornaments.
- **Best For:** Legal presentations, historical archives, and formal institutional reports.
- **Prompt:** "A dignified heritage aesthetic featuring formal serif typography, traditional gold-leaf ornaments, and a historical parchment-style presentation. Use a classic, institutional layout with engraved-style illustrations to convey trust, legal authority, and legacy."



19. Swiss Design (International Typographic Style)

- **Description:** Focus on strict grids, sans-serif typography, and bold geometric shapes.
- **Best For:** High-end design portfolios, clear data infographics, and minimalist communication.
- **Prompt:** "A master-level Swiss Design aesthetic following a strict mathematical grid. Feature bold geometric shapes, high-contrast primary colors against a neutral light-gray background, and ultra-clean sans-serif typography. The layout must emphasize objective clarity, asymmetrical balance, and extreme whitespace."

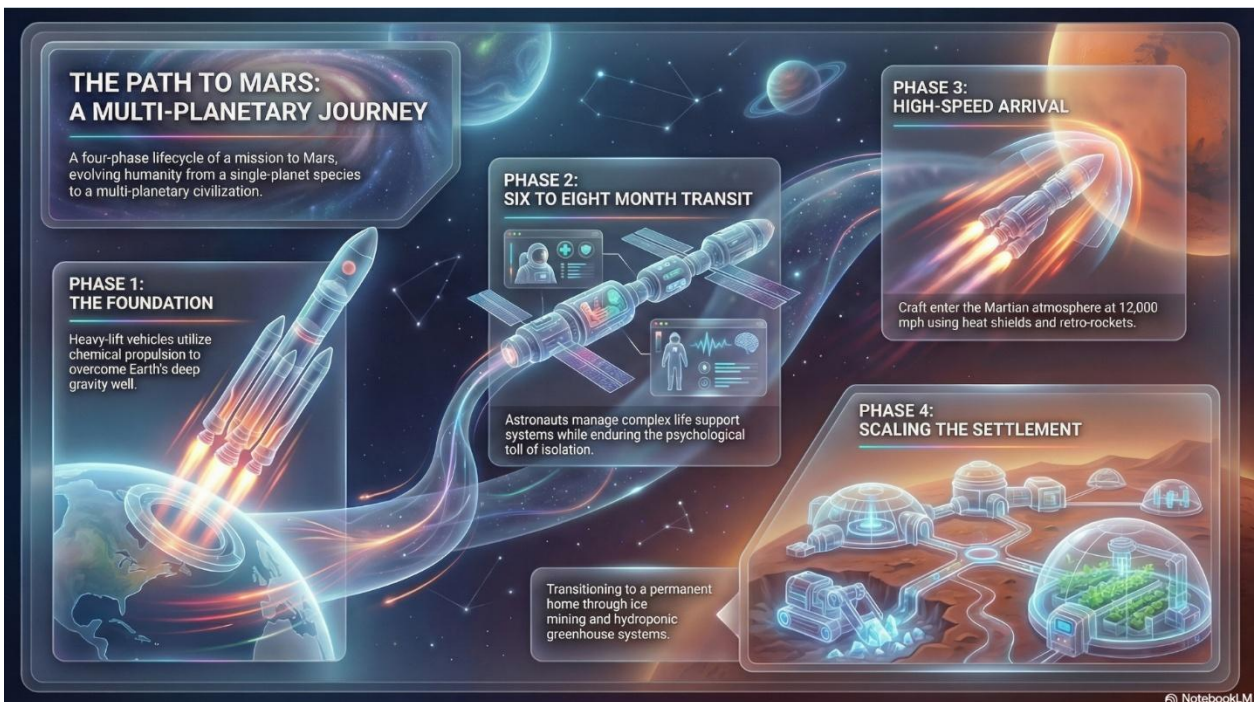
Blueprint for Mars: Humanity's Next Frontier

<p>PHASE 1: The Foundation - Launch</p>  <p>A heavy-lift vehicle uses immense power to overcome Earth's gravity and begin the journey.</p>	<p>PHASE 2: The Experience - Transit</p>  <p>Astronauts endure a 6-8 month journey, managing isolation and complex life support systems.</p>	<p>PHASE 3: The Arrival - Landing</p>  <p>The spacecraft executes a dangerous high-speed atmospheric entry and landing sequence.</p>	<p>PHASE 4: The Scale - Settlement</p>  <p>The mission transitions to a permanent home by mining ice and growing crops.</p>
---	---	--	--

NotebookLM

20. Glass-morphic UI

- **Description:** Focuses on frosted glass transparency and multi-layered depth with a vibrant glowing background.
- **Best For:** Fintech platforms, premium SaaS launches, and high-level visionary growth.
- **Prompt:** "A premium glass-morphic UI style with multi-layered frosted glass panels and a soft ambient glow. Use crisp white typography and thin, vibrant neon accent lines for a sophisticated fintech or high-level visionary tech feel."



21. Corporate Memphis

- **Description:** Flat vector illustrations with stylized human figures and a bright, non-natural primary color palette.
- **Best For:** HR initiatives, DEI reports, and approachable startup pitches.
- **Prompt:** "A modern corporate Memphis aesthetic featuring flat vector characters with non-natural skin tones and geometric shapes. The scene should be minimalist and cheerful, emphasizing community, accessibility, and human-centric collaboration."



Section 4: Playful & Tactile Styles

Best for creative pitches, youth-oriented content, and making complex data feel approachable.

22. Papercraft

- **Description:** Layered, textured, and folded paper cutouts with deep shadows.
- **Best For:** Creative pitches, artisanal branding, and making digital slides feel "tangible."
- **Prompt:** "A detailed papercraft scene with visible paper grain and depth-of-field blur. Feature layered paper cutouts with realistic drop-shadows to show depth and sharp, folded-paper edges for a tangible, artisanal branding feel."



23. Tactile 3D Style

- **Description:** Inflated, soft, skeuomorphic shapes that look touchable.
- **Best For:** Modern consumer tech, kid-friendly presentations, and "softening" data.
- **Prompt:** "A tactile 3D style featuring soft, inflated, skeuomorphic shapes with realistic 'soft-touch' textures. Use gentle studio lighting and balloon-like volume to make data feel approachable and non-threatening for consumer-tech pitches."



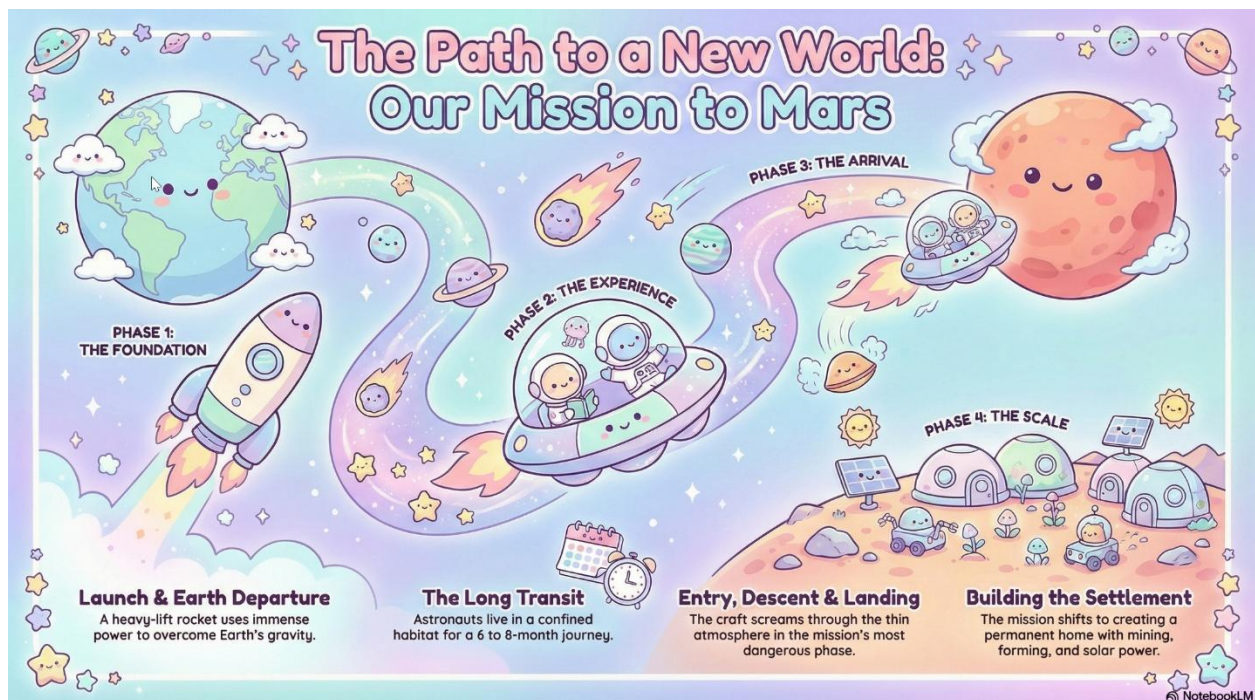
24. Miniature World

- **Description:** A tilt-shift view featuring blocky, toy-like characters and high saturation.
- **Best For:** "Big picture" overview of facilities, smart cities, or logistical hubs.
- **Prompt:** "A tilt-shift miniature world view featuring blocky, toy-like 3D characters and high-saturation colors. Use a narrow focal plane to create the illusion of a small-scale logistical hub or smart-city model."



25. Kawaii

- **Description:** A cute, charming aesthetic with pastel colors and rounded characters.
- **Best For:** Friendly customer service guides, lighthearted culture decks, and "Icebreaker" slides.
- **Prompt:** "A soft Kawaii aesthetic featuring cute pastel colors and rounded characters with simple, friendly vector faces. The vibe should be charming and non-threatening, perfect for culture decks and lighthearted customer guides."

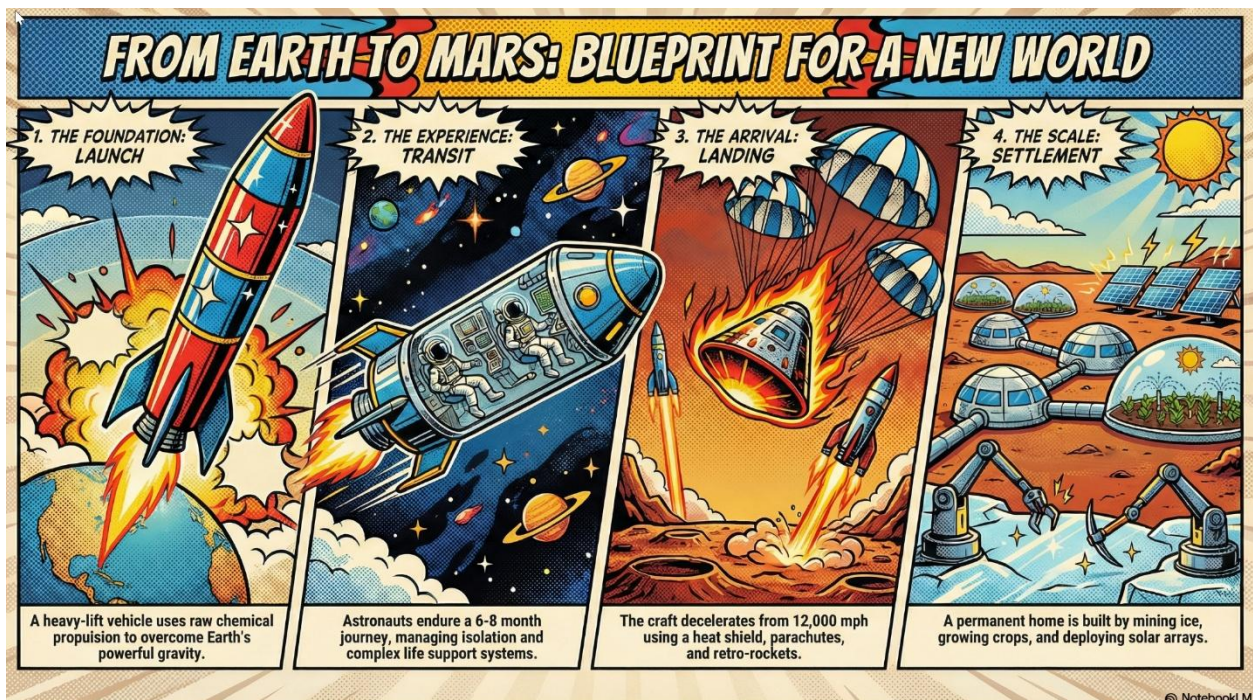


Section 5: Nostalgic, Pop-Culture & Artistic Styles

Best for high-impact marketing, themed presentations, and "breaking the mold."

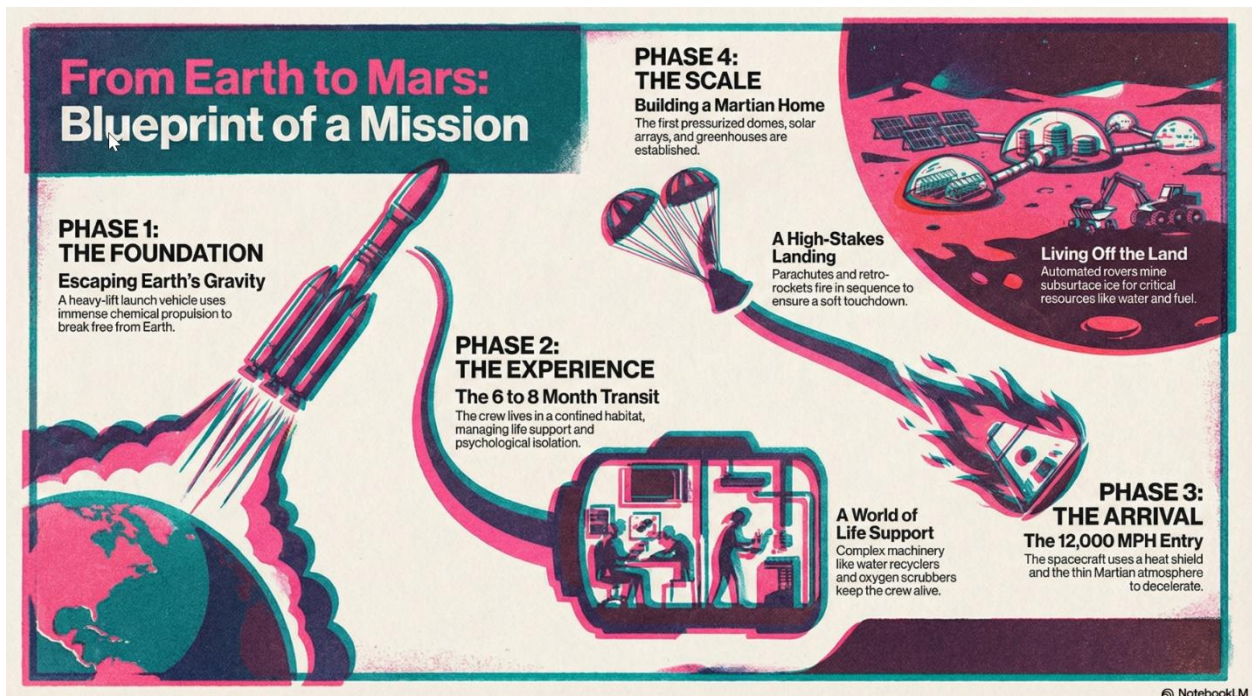
26. Pop Art

- **Description:** Vibrant primary colors, thick outlines, and halftone dots (Lichtenstein style).
- **Best For:** Marketing campaigns, "disruptive" strategy pitches, and high-energy social slides.
- **Prompt:** "A vibrant pop-art style illustration featuring thick black comic-book outlines and high-contrast primary colors. Incorporate visible Lichtenstein-style halftone dot patterns and high-energy disruptive layouts for high-impact marketing."



27. Risograph Print

- **Definition:** A vibrant, retro-modern aesthetic characterized by tactile grain, overlapping ink "misregistration," and high-saturation spot colors.
- **Best For:** Creative agency pitches, trend forecasting, and making internal culture decks feel contemporary and artistic.
- **Prompt:** "A professional Risograph print aesthetic with heavy tactile grain and a distinct lo-fi texture. Feature vibrant overlapping spot colors (like fluo-pink and deep teal) creating secondary colors where they meet. Include subtle ink misregistration, soft paper tooth texture, and a high-contrast, stylized composition."



28. Retro '90s Gaming

- **Description:** 16-bit color palettes and early 3D polygon graphics.
- **Best For:** Tech history, gamification strategies, and developer-focused decks.
- **Prompt:** "A retro-90s gaming aesthetic featuring low-poly 3D models and pixelated textures. Include 16-bit color dithering, a slight CRT monitor curve, and vibrant, saturated lighting. The UI elements should resemble 'Golden Era' RPG menus with chunky borders and pixel-art icons."



29. Oregon Trail Style

- **Description:** A pixelated, 8-bit digital look featuring blocky sprites, primitive digital textures, and high-contrast visuals reminiscent of early educational software.
- **Best For:** Survival metaphors, retro-themed journeys, and classic tech nostalgia, and illustrating “pioneer” or high-stakes project phases.
- **Prompt:** "A pixelated **8-bit Oregon Trail aesthetic** featuring blocky character sprites and primitive environmental textures. Use a limited **CGA or EGA color palette** (heavy on greens, blacks, and browns) with a subtle **retro computer monitor glow** and visible scanlines. The composition should follow a simple side-scrolling perspective with a vintage command-line interface feel."



30. Cyberpunk

- **Description:** A high-contrast aesthetic featuring neon lighting (primarily pink and cyan) with gritty urban textures and high-tech UI elements.
- **Best For:** Future-tech forecasting, cybersecurity, and illustrating "edgy" industrial design or digital transformation.
- **Prompt:** "A high-contrast **Cyberpunk aesthetic** featuring vibrant neon pink and cyan lighting against a dark, rain-slicked urban environment. Incorporate gritty industrial textures and **holographic UI elements** like tech blueprints or data overlays. The image should have deep shadows and a cinematic, atmospheric glow."



31. Anime Battle Style

- **Description:** High-energy visuals with dynamic motion lines and dramatic lighting.
- **Best For:** High-stakes competition decks, motivational speeches, and high-energy product launches.
- **Prompt:** "A high-energy anime battle aesthetic featuring vibrant colors, dynamic motion lines, and dramatic rim-lighting. Include 'shonen' style visual effects like energy bursts and chaotic atmospheric particles to convey high-stakes competition."



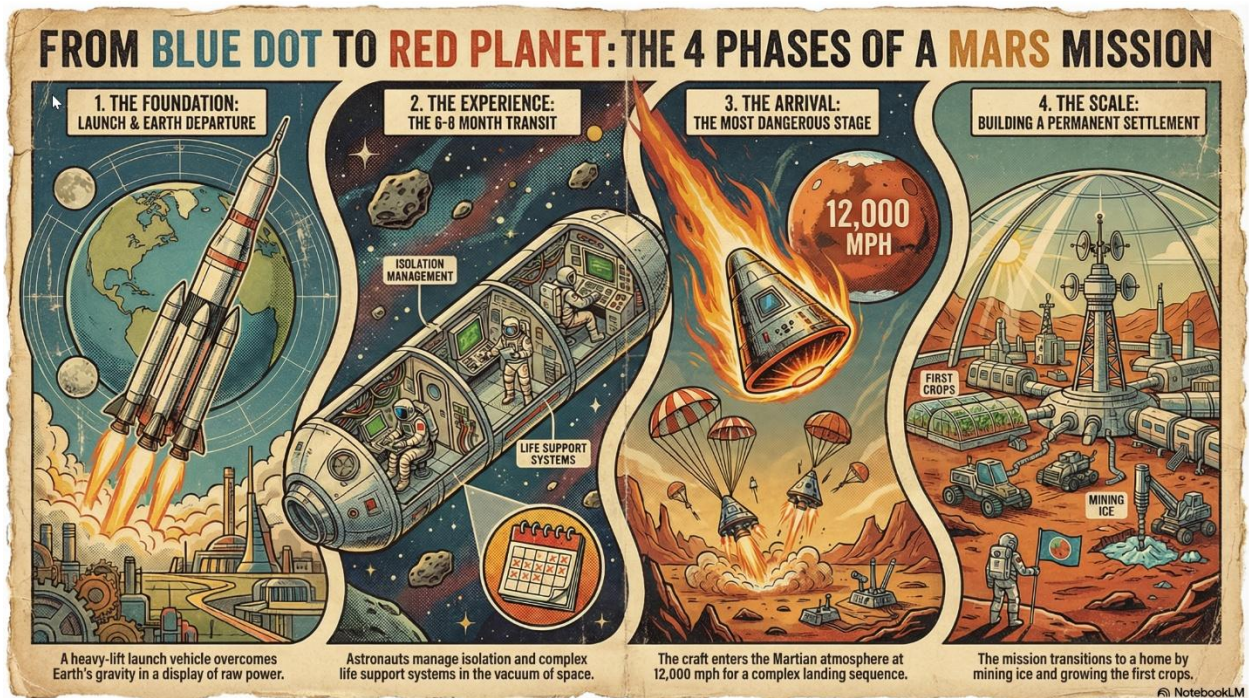
32. Anime

- **Description:** Colorful modern Japanese animation style with clean digital line work.
- **Best For:** Character-driven narratives and vibrant lifestyle marketing.
- **Prompt:** "A modern, high-production anime aesthetic featuring expressive character designs and clean digital cel-shading. Include dynamic 'sun-flare' lighting, highly detailed backgrounds with cinematic 'lens-blur' effects, and a bright, saturated color palette typical of a feature-film production."



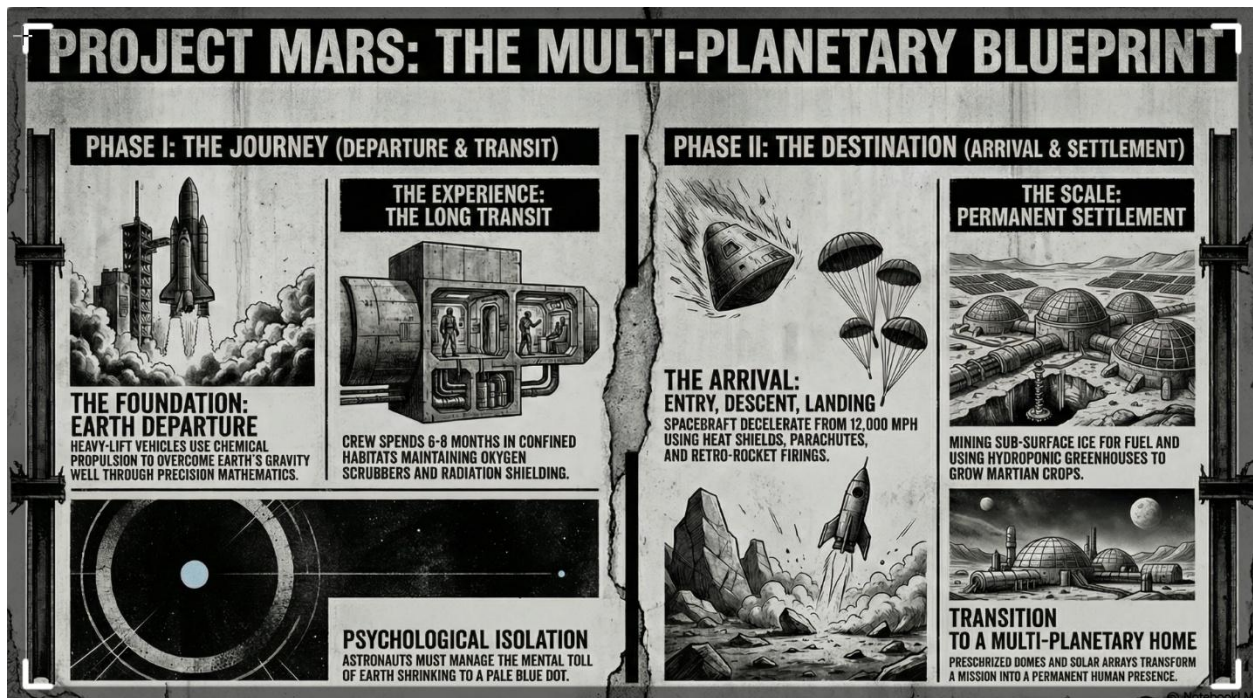
33. Retro Print

- **Description:** Aged paper texture with halftone dots and misaligned ink.
- **Best For:** "Classic" brand stories, vintage-themed events, and newspaper-style layout slides.
- **Prompt:** "A retro print aesthetic featuring aged parchment textures, slightly misaligned ink colors, and visible halftone dot patterns. Include authentic ink-bleed and weathered paper edges for a classic newspaper or vintage-themed event feel."



34. Brutalist Design

- **Description:** Raw, unpolished industrial textures with high-contrast, overlapping elements.
- **Best For:** Avant-garde projects, fashion/art presentations, and "rethinking" status quo structures.
- **Prompt:** "A raw brutalist design aesthetic with unpolished concrete textures and high-contrast black and white imagery. Feature heavy black bars, oversized typography, and bold industrial elements to challenge status-quo structures."



Pro Tips & Technical Notes

1. The Style Matcher: Using Gemini as a Consultant

The most effective way to select an aesthetic is to engage in a dialogue with Gemini after loading this guide as a source. Instead of just picking a number, ask the AI to evaluate your goals.

How to Start a Style Dialogue: Copy and paste this prompt into your Gemini chat:

*"I am developing a presentation based on [Describe your content]. Using the **Master Visual Style Guide** as your reference, suggest the 3 most appropriate styles for this project. Please consider my goal of [Goal: e.g., convincing stakeholders / training staff] and my preference for [Color/Mood: e.g., high-energy neons / professional earth tones]. For each suggestion, explain why it matches my strategic goals and provide a modified prompt incorporating my color preferences."*

Strategic Logic Guide: Choosing Between Similar Aesthetics

The Strategic Conflict	Option A: The "Pragmatic" Choice	Option B: The "Visionary" Choice
Technical Data	06. <i>Exploded View Diagram</i> : Use to show <i>how</i> a specific part works.	13. <i>High-Contrast Monospace</i> : Use to show the <i>authority</i> of the data itself.
Data Authority	09. <i>Minimalist 2D Data-Viz</i> : Use for raw, undeniable statistical clarity.	16. <i>Executive Dashboard</i> : Use for high-density, real-time command center summaries.
Corporate Tone	16. <i>Swiss Design</i> : Use for established, stable, and "safe" high-end brands.	17. <i>Glass-morphic UI</i> : Use for disruptive, "next-gen," and premium tech brands.
Human Connection	03. <i>Sketch Noting</i> : Use for personal, organic, and "live" brainstorming feels.	18. <i>Corporate Memphis</i> : Use for professional, scaled, and modern team-based narratives.
Emotional Depth	04. <i>Graphite & Charcoal</i> : Use for deep, somber, or historical human focus.	17. <i>Watercolour</i> : Use for fluid, artistic, and atmospheric storytelling.

The Strategic Conflict	Option A: The "Pragmatic" Choice	Option B: The "Visionary" Choice
Future Casting	08. <i>Professional Futuristic</i> : Use for realistic, high-end corporate digital transformation.	26. <i>Cyberpunk</i> : Use for edgy, disruptive, and radical future-tech shifts.
Brand Impact	33. <i>Retro Print</i> : Use for a "classic" and established newspaper/archive feel.	27. <i>Risograph Print</i> : Use for a trendy, modern, and high-saturation artistic aesthetic.

2. Technical Execution: Aspect Ratio & Composition

NotebookLM and slide decks typically require a **16:9 widescreen** format. By default, image generators may produce squares.

- **The "Widescreen" Command:** Always append the phrase "in a 16:9 widescreen aspect ratio" or "cinematic horizontal composition" to the end of your prompt.
- **Rule of Thirds:** If you need space for text on your slide, add: "with the main subject on the far left/right, leaving significant empty whitespace on the opposite side for text overlay."

3. Handling Text and Labels

AI models often struggle to render specific, long strings of text accurately within an image.

- **The "Visual First" Rule:** Generate the high-quality background and icons using this guide first. Use your presentation software (Google Slides, PowerPoint) to overlay the actual titles and data points.
- **Prompting for Labels:** If you want the AI to *try* and include a title, use quotes: "featuring the large, clear title 'MISSION TO MARS' in bold sans-serif typography[cite: 59, 76]." Keep it to 3 words or fewer for the best chance of success.

4. Negative Prompting: What to Avoid

To keep your slides professional and prevent "AI clutter," you can tell the model what to exclude. Append these "negative" keywords if the results are too busy:

- **For Clean Styles:** "Avoid cluttered backgrounds, photographic realism, complex gradients, or blurry textures[cite: 34, 44, 74]."
- **For Technical Styles:** "No perspective distortion, no 3D depth, avoid shadows, and no decorative ornaments[cite: 28, 32]."

5. Selecting the Right Aesthetic (Quick Reference)

If you need to make a fast decision, use this logic to match your content's goal to a specific section:

- **Goal - Training & Simplification:** Use **Section 1 (01–04)**. These styles mimic instructional environments (chalkboards, whiteboards) to make new information feel educational.
- **Goal - Precision & Structure:** Use **Section 2 (05–10)**. These provide a high-tech, "engineered" feel, perfect for showing how things work or building a "Master Plan".
- **Goal - Vision & Strategy:** Use **Section 3 (11–18)**. Use these for roadmaps, business cases, and executive-level summaries that need an authoritative yet visionary tone.
- **Goal - Engagement & Approachability:** Use **Section 4 (19–22)**. These "soften" complex data using tactile or "cute" visuals, making the audience feel the content is tangible and non-threatening.
- **Goal – High-Impact Marketing:** Use **Section 5 (22–30)**. These "break the mold" with pop-culture references or edgy artistic textures to ensure your presentation is memorable and disruptive.

6. Reverse-Engineering New Styles

If you encounter a visual aesthetic on a website, in a magazine, or in a presentation that isn't among these 27 styles, you can use Gemini to "deconstruct" it into this guide's format.

How to Query Gemini for Style Extraction: Upload a screenshot or provide a detailed link to Gemini and use the following prompt:

Analyze the visual aesthetic of this [Image/Website/Slide]. Deconstruct it into my Style Guide format:

1. **Name:** A 2-word title for the style.
2. **Description:** A 1-sentence technical summary of the visual elements.
3. **Best For:** 3 specific professional use cases.
4. **Prompt:** A high-density image generation prompt that specifies textures, lighting, and composition."

What to Look for in the Output:

- **Technical Terms:** Ensure Gemini uses terms like *depth-of-field*, *vector*, *halftone*, or *skeuomorphism* to give the prompt "teeth."
- **Comparison:** Ask Gemini: "How does this style differ from Style 15 (Swiss Design) or Style 3 (Sketch Noting) in my current guide?" This ensures your new style is distinct.

7. Modifying Color Schemes (The "Color Override")

Most styles in this guide (with the exception of *Style 12: Neumorphic*, which relies on monochromatic shadows for its 3D effect) can be recolored to match your specific branding or mood.

The Three-Layer Color Prompt: To change a style's color without breaking its aesthetic, append these three keywords to the end of any prompt:

1. **The Base:** Specify the dominant background color (e.g., "Deep Navy background").
2. **The Accents:** Pick 1–2 high-contrast colors (e.g., "with Electric Gold and Teal accents").
3. **The Lighting:** Define the color of the light (e.g., "warm amber lighting" vs. "cool blue daylight").

Example Modification (Style 07: Blueprint):

- **Original:** White lines on deep cyan-blue.
- **Modified for "Dark Industrial" Brand:** "A high-contrast blueprint style, **neon-orange** technical architectural lines on a **charcoal-gray** background with a grid overlay."

Example Modification (Style 17: Watercolour):

- **Original:** Atmospheric fluid textures.
- **Modified for "Sustainability" Report:** *"A soft watercolor painting with fluid brushstrokes in **earth-tone greens and sage**, with **terracotta** accents and an artistic, atmospheric feel."*

Editors: Mark Carver & Gemini, January 2026